



**Merry Christmas and a Happy
New Year from everyone at
St Wilfrid's!**



**We have thoroughly enjoyed
the different Christmas
performances during our
Advent season.**

**December
2024**



**Our Reception
classes
performed their
Nursery Rhyme
Nativity.**

**'The Angel Who
Nearly Missed It
All' performed by
our Year 1 and 2
children.**





**Years 3 and 4
Carol Service at
St Wilfrid's
Church.**



**Years 5 and 6
Carol Service at
St Wilfrid's
Church.**



**Well done to our
Christmas decoration
winners!**

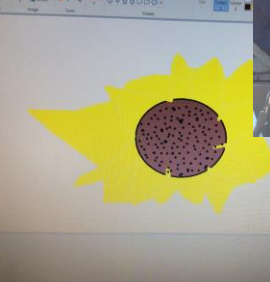
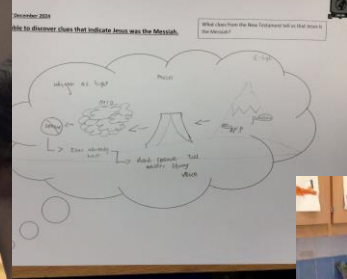


**The school Choir sing at
The Ascension Church
Carol service**





Project Learning in December...



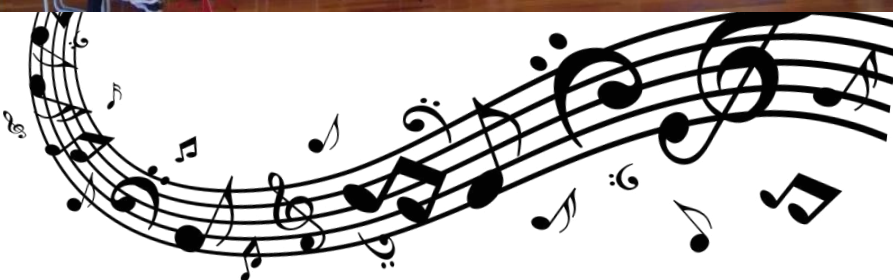


The Performing Arts at St Wilfrid's.

All year groups have again been working hard as part of their enrichment music sessions this term. This term it has been the turn of Years 3, 4, 5 and 6 to perform their mini showcase of learning to their buddy year groups to share what they have been learning. We have been impressed with all of the different skills seen across the school from singing harmonies, ukulele's, recorder's, body percussion and more!
We look forward to Year 1 and Year 2's mini showcases next term!



Our children that learn guitar treated their friends to a glimpse of what they had been learning this term in their music lessons and treated us to a festive performance of 'We're Walking In the Air'.
What a brilliant piece it was!



The Performing Arts at St Wilfrid's.

To kick off the festive season, we enjoyed another fantastic pantomime visit from 'Stage-ed' with their production of Cinderella! We particularly enjoyed the audience participation and loved cheering on the 'goodies' and booing the 'baddies'. The children particularly enjoyed seeing their teachers join in the dance moves too!



This term our Year 5 and 6 classes all had a visit from the 'Pauline Quirk Performing Arts Academy' and took part in a musical theatre workshop. The children had a fantastic session taking part in a circus themed workshop including acting characterisation and learning a dance routine to songs from 'The Greatest Showman'. At end of the session they were all able to put on a fantastic performance of their final piece!



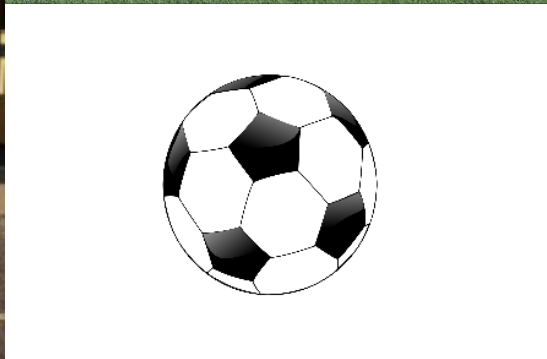


PE and Sport at St Wilfrid's

Well done to our Boys and Girls football teams! They both qualified runners up from the Haywards Heath Football tournament for the Mid-Sussex finals. They competed against schools from Burgess Hill and East Grinstead.



This Photo by Unknown Author is licensed under CC BY-NC



Mid-Sussex Active organised a session of different activities for children to try.





PE and Sport at St Wilfrid's



A group of children in Year 2 took part in a multi-skills session.



A team of Year 5 and 6 competed in the Mid Sussex basketball tournament.



We had a brilliant 'Skip 2B Fit' day and all the children in Years 1 to 6 took part. In January we have some exciting news to share...








Attendance

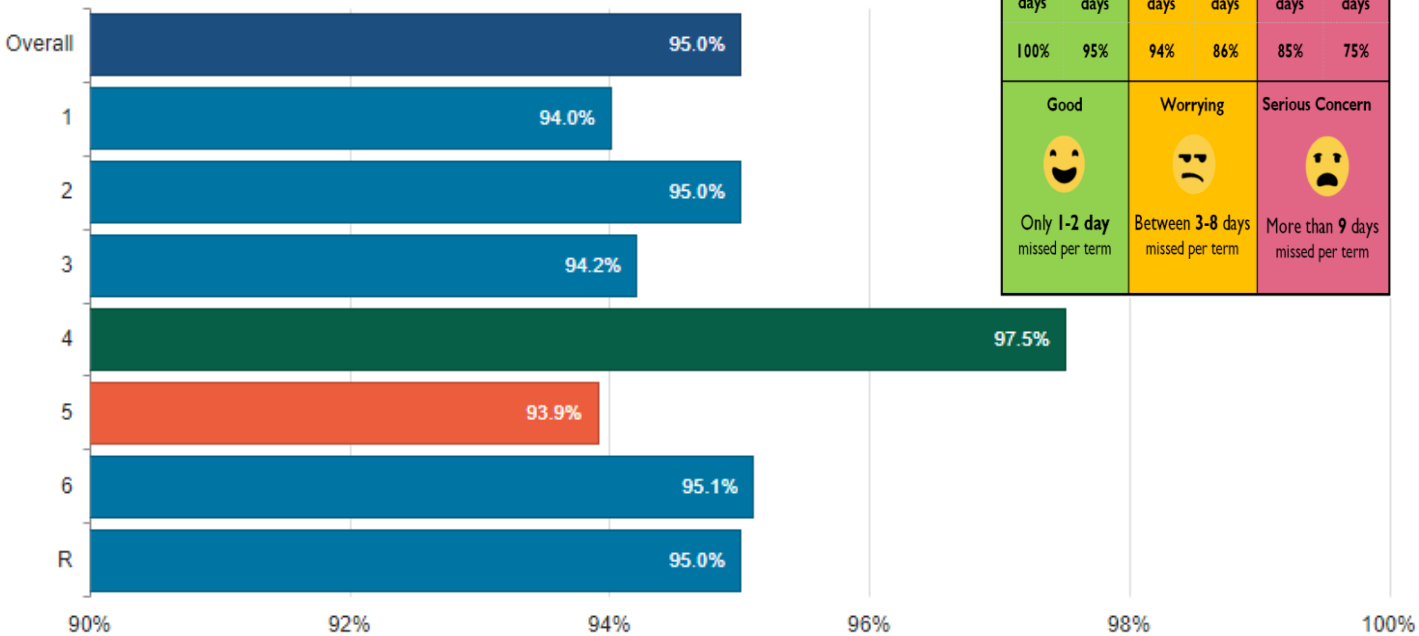
At St Wilfrid's we believe that being in school every day, is important to your child's achievement, wellbeing, and their wider development. Therefore, attending school is very important and we are focussing on making sure our children are in school as much as possible to ensure they achieve their best.

Our Target for attendance is 97% and we are currently below that target.

Following the review at the end of the first 8 weeks, we will once again review the attendance in the new year and families where the attendance is below 95% will receive an email from the school to highlight this.

Obviously, with illness and other genuine reasons for absence then we do not expect children in school. However, we thank you for your support in ensuring your child is in school when they are supposed to be, so that 'Together We Will Be Our Best'.

WHAT IS GOOD ATTENDANCE?					
190 days	180 days	178 days	163 days	161 days	143 days
100%	95%	94%	86%	85%	75%
Good 	Worrying 	Serious Concern 			
Only 1-2 day missed per term	Between 3-8 days missed per term	More than 9 days missed per term			



Our value this half term

Each half term we focus on one of our values, which is embedded into our learning to help the children understand and appreciate their environment, the wider world and to help them be the best they can be.

This term our value is **Hope**.

We live with **HOPE**. We have the courage to meet the opportunities and challenges of the future, secure in God's love for us.

'May the God of hope fill you with all joy and peace as you trust in him'

Romans 15:13

